



Midland Metropolitan University Hospital

An update on progress –

Richard Beeken- CEO

13th September 2023

Getting to know Midland Met - a recap

Midland Metropolitan University Hospital will be our acute centre for care and includes:

- A purpose-built emergency department with co-located imaging and diagnostic services.
- A dedicated children's emergency department and assessment unit.
- Operating theatres for both emergency and major planned surgery.
- A midwife led birth unit next to a delivery suite, two maternity wards and an antenatal clinic, plus a neonatal unit.
- Same day emergency care for adults.
- Sickle cell and thalassemia centre.

Patients can expect to receive all of this as a standard part of our care model:

- The same high standards any day of the week with senior doctors leading expert clinical teams.
- Diagnostic tests including x-ray, MRI and CT scans, plus other tests for urgent care.
- Our Winter Garden and outdoor spaces are designed to help patients stay active.



Our latest progress video highlights some of our main achievements...



The benefits of our new hospital

The hospital will house state-of-the-art equipment to support faster diagnosis and improve patient outcomes.

- It will be home to 11 emergency, trauma and elective inpatient operating theatres, maternity theatres and 15 birthing rooms for maternity services.
- The wards and rooms centre on patient wellbeing. All bedrooms have an external view onto one of the courtyards or surrounding areas of the hospital.
- The design includes 50 per cent single rooms with en-suite shower rooms in the main ward areas which will reduce the risk of spreading infections.
- The hospital provides a dementia friendly environment. Colours and clear bed numbers will help patients identify where they are. Layouts of wards will be the same, with each group of four beds within a ward having a different colour theme.



Our future service model

Whilst Midland Met will care for patients that need emergency care or a stay in hospital, most outpatient care, day-case surgery and routine diagnostics remain at the Sandwell and City Hospital sites. This includes

- A 24/7 urgent treatment centre in Sandwell.
- Birmingham Treatment Centre and Birmingham and Midland Eye Centre (BMEC) at City Hospital.
- Provision for step down / rehab facilities.

Significant changes are continuing to take place in our community and primary care services so that even more care can be provided in people's own homes.





...and to ensure...



Clinical services transformation

In preparation for the opening of Midland Met, crucial work is being undertaken across 12 areas to transform our services, focusing on our acute care model. It comprises of these services.

Emergency Department 2 site to 1	Senior decision making supported by rapid diagnostics to support right care right place.	Acute therapies 2 sites to 3	Extended working hours will enable patient therapy provision to support earlier discharge.
Same Day Emergency Care 2 site to 1	Expansion of same day emergency care (SDEC) pathways to optimise ambulatory care, reducing admissions and assessment unit demands.	Imaging 2 sites to 3	Improved turnaround times will support rapid decision making at the front door. Demand management and artificial intelligence will improve efficiency.
Assessment Units 2 site to 1	Rapid diagnostics and decision making over seven days to reduce length of stay (LOS) in assessment units.	Endoscopy 2 sites to 3	Separation of inpatient and outpatient endoscopy to the treatment centres and Midland Metropolitan University Hospital to support patient flow and productivity.
Older peoples Care & Frailty 2 site to 1	End to end acute and community care will prevent patients being admitted unnecessarily or reduce LOS if admitted.	Place Partnership	Community beds and home-based services right sized to enable increased supported discharge from acute settings.
Stroke Decoupling	Rehabilitation to be provided in a community setting to improve patient care, end of life experience and release acute beds.	Theatres 2 sites to 3	Increased use of day case pathways with day case activity split from elective and emergency activity will improve.
Cardiology	Increased use of ambulatory pathways and day case procedures will prevent patients being in hospital unnecessarily.	Enhanced Care	Provision of a post anaesthetic care unit (PACU) and ward based enhanced care to support care pathways.

OUR FUTURE SERVICE MODEL BY SITE

(Plans as of January 2023)

DUDLEY ROAD SITE (City Hospital)

BIRMINGHAM TREATMENT CENTRE

OUTPATIENT SERVICES

Including:

- General clinics for multi-speciality use.

Bespoke OP services

- ENT and SLT
- Breast services
- Gynaecology & Colposcopy
- Hearing Services
- Orthopaedic & Fracture Clinic
- Oral Surgery (TBC)

DIAGNOSTIC

- Endoscopy Unit
- Imaging (PE, US, MRI, CT)
- Phlebotomy
- Cardiac Diagnostics Respiratory Physiology (main dept)

DAY TREATMENT

Day Surgery Unit (6 theatres) & minor ops

OTHER

- Pharmacy
- Research

SHELDON

OUTPATIENT SERVICES

Including:

- Dermatology
- Cardiac Rehabilitation
- Pain Management Clinics Therapy Services (Rehab, OT, Neurology, SLT, MSK)
- Dietetics

DGM Building

- Clinical Admin
- National Poisons Information Service (NPIS)

BIRMINGHAM MIDLAND EYE CENTRE (BMEC)

OUTPATIENT & DIAGNOSTIC SERVICES

- Ophthalmology clinics (adults & children)
- Glaucoma clinics
- Visual Function dept Orthoptics
- Optometry
- Other specialist eye diagnostics
- Behcet's Service
- Medical Illustration

OPHTHALMOLOGY A&E

DAY TREATMENT

Ophthalmology Day Surgery (adults & children)

OTHER

- Clinical Admin
- Training facilities

MIDLAND METROPOLITAN UNIVERSITY HOSPITAL

URGENT TREATMENT CENTRE

ACUTE INPATIENT BEDS: 732

- 13 Adult wards (32 beds each) including coronary care (14) beds, hyper acute stroke (6) beds & level 1 beds (16 distributed within wards)
- 2 Maternity wards (56 beds)
- 30 Critical Care beds
- 36 Neonatal cots
- 50 Paediatric beds (& 6 day case spaces)
- 108 AMU beds & 24 Same Day Emergency Care trolleys

EMERGENCY / ELECTIVE SURGERY / DAY CASE

- Emergency Department
- 2 Trauma theatres
- 2 Emergency theatres
- 7 Elective theatres
- 2 Maternity theatres
- 15 Delivery Suites
- 6 Birthing centre
- Medical Infusion/Procedure Suite & SCaT

DIAGNOSTIC

- Endoscopy Unit
- Cardiac Interventional Suite (2 cardiac labs) Imaging (Plain x-ray, US, Ante Natal US, MRI (1), CT (2), Physics & Nuclear Medicine, IR) Medical Illustration (inpatient support) Essential Service Laboratory Medical intervention unit
- Cardiac Diagnostics (main dept)
- Respiratory Physiology (inpatient support)
- Neurophysiology (inpatient support)

OUTPATIENT SERVICES (Bespoke)

- Antenatal Care and phlebotomy
- Paediatrics (including audiology test room, orthoptic consulting rooms)
- Urodynamics

OTHER

- Research
- Pharmacy
- Clinical and Corporate Administration
- Education Centre
- Multi faith Centre
- Mortuary
- Integrated discharge hub

Community Intermediate Care Beds

SANDWELL TREATMENT CENTRE

OUTPATIENT SERVICES

General clinics for multi speciality use

Bespoke OP Services including:

- ENT
- Gynaecology + Colposcopy
- Paediatrics
- Orthotics (main dept)
- Orthopaedics & Fracture Clinic
- Midwifery led Antenatal Care
- Dietetics
- Dental
- Therapy Services - (MSK, Hand Therapy, SLT, OT, Foot health)
- Cardiac Rehabilitation Clinical Research facility

DIAGNOSTIC

- Endoscopy Unit
- Imaging (Plain x-ray, US, Ante natal US, MRI, CT)
- Medical Illustration
- Phlebotomy
- Cardiac Diagnostics
- Neurophysiology Service (main dept)
- Respiratory Physiology
- Pathology (specialist labs)
- Integrated discharge hub

SANDWELL URGENT TREATMENT CENTRE

PRIMARY CARE GP practice

OTHER

- Trust Headquarters
- Occupational Health Department Pharmacy
- Mortuary (main dept inc. PM)
- Clinical and Corporate Admin Academic & Research (main dept)
- Education Centre

DAY TREATMENT

- Chemotherapy Services
- Medical Infusion Suite
- Day Surgery Unit (4 theatres)

Community Intermediate Care Beds

ROWLEY REGIS HOSPITAL

OUTPATIENT SERVICES

General clinics for multi-speciality use including:

- Community Clinics
- Ophthalmology
- Dental
- Urology
- Gynaecology (community)
- ISHUS
- Dietetics
- Children's services
- Therapy Services - (MSK, Rehab, SLT, OT, Foot health)

DIAGNOSTIC

- Imaging (Plain x-ray, US)
- Phlebotomy
- ECG

PRIMARY CARE COMMUNITY

Admission Avoidance Service

URGENT COMMUNITY RESPONSE

ADMISSION AVOIDANCE

VIRTUAL WARDS

OTHER

- Clinical and Corporate Admin
- Main Catering Unit

DAY TREATMENT

- Heart of Sandwell Day Hospice

Community Intermediate Care Beds

LEASOWES

COMMUNITY SERVICES

ICARES, District Nursing, ESD Stroke Team, School Nursing, Health Visiting, Specialist Nursing Teams (Continence, Heart Failure, Diabetes, Falls), ISHUS, Community Rehabilitation Teams, Case Management Team, Foot Health, Admissions Avoidance Team, HAPO, MSK Clinics, Hand Therapy Service, Specialist Diabetes Service, Community Paediatric Nursing, Specialist Nursing & Therapy Teams, Respiratory Team, HIV Clinic, GP practices & other primary care services.



Patient Objective Benefit Total
£796m

People Objective Benefit Total
£982m

Population Objective Benefit Total
£241m

Enable outstanding health outcomes for patients with equality of service provision no matter where you live.

Provide a safe and welcoming environment for care.

Provide integrated care services that are seamless for patients.

Develop career pathways for local people

Provide an inspiring and inclusive place to work

Provide comfortable and productive spaces that make people feel valued

Develop career pathways for local people

Provide an inspiring and inclusive place to work

Provide comfortable and productive spaces that make people feel valued

Patients – top 3 benefits	£M
Reducing the acute bed base	448
Split of Elective and ED	244
Agency Savings	39
TOTAL PATIENT RELATED BENEFITS	796

People – Top 3 benefits	£M
Consultant Journeys	356
Employment GVA	217
Staff Satisfaction Increase	172
TOTAL PEOPLE BENEFITS	982

Population – Top 3 benefits	£M
MMUH Construction GVA	142
Homes England GVA	41
Homes England Council Tax	23
TOTAL POPULATION BENEFITS	241

The MMUH programme of service transformation , workforce redesign, and building construction , is the biggest such development on-going in the English NHS at the this.

To ensure that we can fit effectively in the new hospital we have a plan to reduce the number of occupied inpatient beds ‘on year.

We have successfully progressed the 62 bed-closure plan with a total of 32 beds now closed and a further 30 due for closure by October 2023. To ensure that we can safely close unfunded beds and mitigate against any risks , our teams are achieving this through multiple schemes aimed at admission and attendance avoidance.

These include Urgent Community response, frailty same day emergency care (FSDEC), medical and surgical SDEC, virtual wards and care homes admission avoidance. All these schemes are starting to meet or even exceed the expectations that we have of them

Would not be possible without our partners at ‘Place level – SMBC; Adult Social Care, Integrated Care Board, local GPs and colleagues in the voluntary and 3rd sector.



Are we recruiting more roles at Midland Met?

- The Trust board have agreed to 484 more staff at Midland Met and there are a number of active recruitment campaigns underway to support us in being fully staffed.
- We hosted a dedicated consultant open day on 7 July at Midland Met to support our objective to recruit to some of these roles.
- We are also focusing heavily on local employment for local people with a target of over 35% of jobs for local residents,



CONSULTANT OPEN DAY
Friday, 7 July
09:30 - 15:30

CONSULTANT OPEN DAY
Friday, 7 July 2023 | 09:30-15:30
Midland Metropolitan University Hospital | Canal Street, B66 2BT

The new Midland Metropolitan University Hospital opens in Birmingham in 2024. It brings together acute and emergency care onto a single site, in a new state of the art clinical facility.

Sandwell and West Birmingham NHS Trust, that is responsible for the new hospital, is seeking excellent clinical candidates for consultant posts that will work in the new facility and across the wider Trust.

ABOUT THE OPEN DAY
At our open day you can:
• Find out about consultant roles and opportunities at the Trust.
• Take a tour of the new hospital and the Trust's other sites.
• Meet senior clinicians and Trust executives.
• Find out about innovative services, research and development and teaching opportunities.
• Join Trust staff for an evening in Birmingham.

Scan the QR code below to register or contact michelle.jarrold@nhs.uk to find out about roles available.

ABOUT MIDLAND METROPOLITAN UNIVERSITY HOSPITAL
Our new hospital will offer outstanding clinical facilities, operating theatres, rapid diagnostics, same day emergency care services, assessment units, maternity services, acute medical and surgical wards. Half of the beds are in single en-suite rooms. The unique design of the building protects patient privacy and dignity with dedicated routes for visitors, patients and staff. The public areas include an indoor winter garden with an art gallery, green spaces, retail outlets and community facilities. The Trust will maintain its existing three hospital sites that will predominantly run outpatient clinics, routine diagnostics and day case surgery.

ROLES AVAILABLE
As we near opening we are designing new ways of working and have a range of consultant and other clinical roles on offer. In particular we are looking for consultants in:
• Acute medicine
• Elderly care
• Stroke
• Critical care
• Diabetes and endocrinology
• Paediatrics
• Emergency medicine
• Radiology
• Rheumatology

Richard Beakes, Chief Executive: "This is a once in a career opportunity to work in a Trust that is opening a brand new hospital with a model of care that is truly integrand. We are passionate about supporting the community we trust and Midland Met provides the catalyst for significant local investment. We hope you'll join our team and meet our dedicated team."

Dr Sarah Chen MBE, Deputy Chief Medical Officer and Acute Physician: "Working at this Trust has enabled us to provide high quality, safe care for our patients whilst giving the clinicians opportunities to develop as a clinician, leader, innovator and a leader with clinicians leading at the forefront and a family culture you will have a fruitful career where you will really make an impact on the patients we serve."

Booking is essential to reserve your place.
bit.ly/SWBConsultant23

Supporting local employment

- The MMUH programme set ambitious targets for ensuring over 35% of residents work in or supporting the new hospital
- The SWAP Programme involves us working with Sandwell College to develop course to upskill local people and help them gain employment
- The recruitment teams working closely with widening participation teams has been successful in offering 14 ward service officer roles through this scheme
- We are also working on developing this further to bring in health care support workers .
- This is critical to us doing our bit to improve not just health, but the life chances for local people.



We are fortunate across Sandwell and West Birmingham to have strong relationships across health, social care and the voluntary, community and faith-based sector including those grass routes organisations who live and work in our communities, supporting local people



We are recruiting Members for our first Hospital Young People's Forum

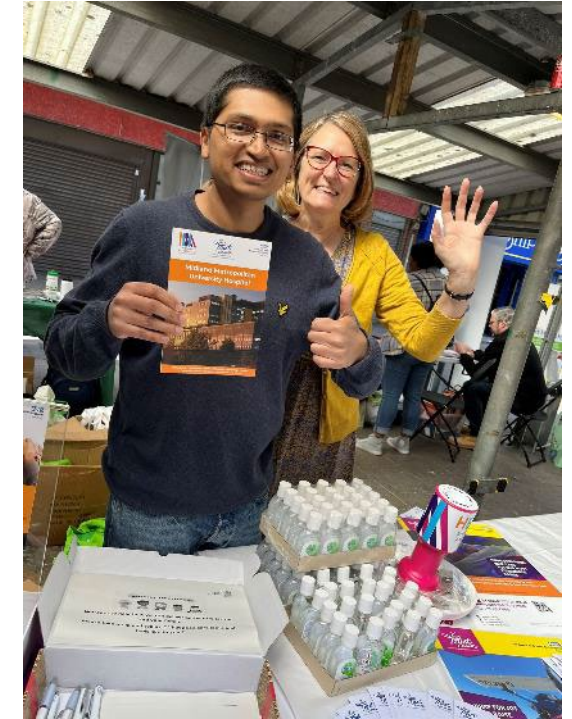
Are you aged 13-21? Interested in Health? Want to know more about our hospitals & community services?

Sandwell and West Birmingham Hospitals NHS Trust is excited to announce that we are recruiting for our first ever Young People's Forum and we are looking for young people across Sandwell and West Birmingham to be part of it.

What is it?

- The purpose of our forum is to give young people a voice, to work with us and tell us about the good stuff and help us make the others things better
- It's an opportunity to help shape future services
- A great way to meet other young people interested in health
- All expenses are covered - travel, food, drinks

Interested? Join us on Thursday 25th August at 6.00pm in the Education Centre, Sandwell Hospital, Hallow Street, West Bromwich, B70 4HJ. Please drop an email at subh.engagement@nhs.uk or visit our website for more information www.swbth.nhs.uk



Public & community engagement

We are completing public engagement across the 12 core transformation areas. So far, we've:

- Completed our day case surgery conversation.
- Our stroke services conversation is in progress.

We have undertaken near neighbours' events in early 2023 and planned again early 2024. Speaking to over 900 local residents and listening to their concerns and ideas.

During 22/23 we have talked to residents of Sandwell at Town Teams led by HealthWatch and more to come .



And we are on the move.....

Our **Midland Met Mobile** is hitting the road! We've transformed a disused patient transport van into a rolling billboard for the brand-new hospital, all part of an effort to connect with our communities.

Our goal? To make sure that every resident of Sandwell and West Birmingham knows that Midland Met is on the horizon and here to transform their healthcare for years to come.

You'll see our van at libraries, shopping centres, and the heart of the community, sparking conversations about our upcoming hospital and how it will affect everyone around us.

We'll be taking our messages out into the community, driving into each one of our neighbourhoods. We know that we have strong communities around us, but we must engage and enable them to feel a belonging to our new hospital. (locations available on website from Sept 23)



System and stakeholder visits

We have hosted several visits over the past year with key stakeholders including John Spellar, MP for Warley who visited in May

He was encouraged to see the pace encouraged by which construction was moving and the finished rooms are very impressive. He said that ‘The Trust management team is focused on completion, and it is reassuring to see that both the community’s wealth and health are big factors in this development. The regeneration of the area has already helped create jobs and new career opportunities and is impressive’.

During stakeholder visits we have articulated the radical changes we need to make to how we deliver community and acute services, to deliver the benefits (clinical, environmental, financial) that we know that MMUH can bring.



Transport and Connectivity

What will the transport links to Midland Met be?

Whilst Midland Met has been designed to accommodate plenty of covered parking within the building for staff and patients, there are several programmes to support sustainable travel.

Bike lanes from Sandwell and Birmingham will converge on Midland Met, the canals are being redeveloped to offer a scenic route to site and buses will be regularly scheduled, arriving and departing from the front of Midland Met.

We are working with Transport for West Midlands on the public transport routes with potential for on site bus stops and a new bus route.

And plans to help support routes for local residents of the Sandwell Borough



Key elements of regeneration

Economic

- Increasing skills, employment and wages, attracting new businesses and investment, redevelopment of brownfield land.
- Encouraging new housing and infrastructure investment.

Social and cultural

- Interventions which promote health and wellbeing, strong and engaged communities, arts and culture.

Environmental

- Sustainability and net zero carbon.
- Active travel initiatives, accessible green space and measures to reduce air pollution.

Effective delivery requires:

- Leadership and vision.
- Collaborative working and partnerships.
- Aligning resources.



Midland Met learning campus

- Partnership with the Sandwell College, Aston and Wolverhampton universities, incorporates The Learning Works.
- Focus on skill shortages across additional clinical services, allied health professionals and nursing and midwifery.
- Provides pathways into long term employment for residents and will accelerate the delivery of transformational regeneration in the area.



- 1280 learners will be assisted every year across a range of short and longer term courses.
- Includes community space; the design will encourage the community to engage, explore and seek out opportunities.
- Circa £15.7m capital requirement - £12.9m already secured from the Towns Fund government programme.
- Gateway location on our own land at the front of Midland Met – students will be able to connect training to real life experience.



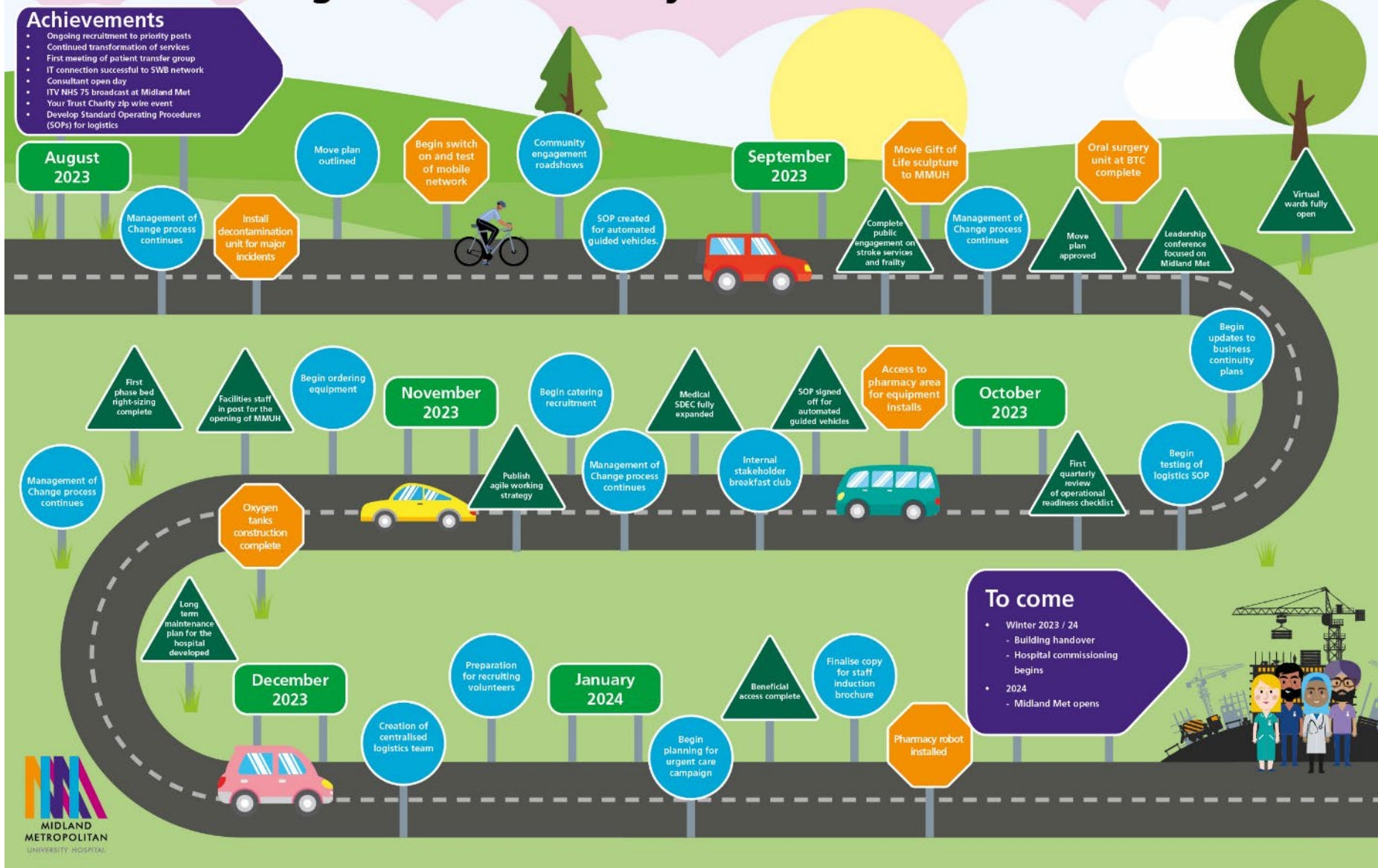
Opportunities at or close to Midland Met

- Midland Met learning campus.
- Community garden.
- New housing – mixed modes, apartments and houses.
- Employment opportunities, commercial and retail.
- Education from 16+ through to university level.
- Improved connectivity between canal tow path and hospital site.
- Active travel opportunities – bike lanes connecting Sandwell and Birmingham.

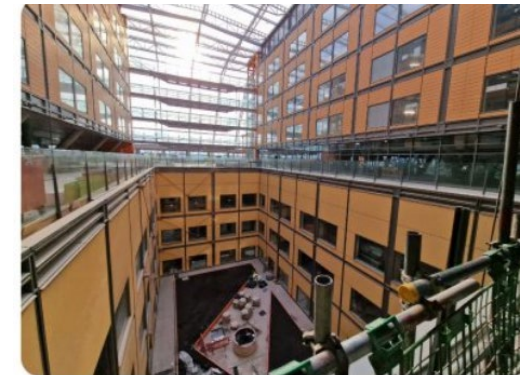
Midland Met Critical Milestones: August 2023 – January 2024

Achievements

- Ongoing recruitment to priority posts
- Continued transformation of services
- First meeting of patient transfer group
- IT connection successful to SWB network
- Consultant open day
- ITV NHS 75 broadcast at Midland Met
- Your Trust Charity zip wire event
- Develop Standard Operating Procedures (SOPs) for logistics



- We continue to drive excellent work on community engagement for the new hospital
- Have developed our work hosting strategic planning workshops with councils and ICB leaders, on how to regenerate and improve the corridor of land between MMUH and Birmingham City Centre
- City Hospital site long term redevelopment plans
- Made considerable progress on building the MMUH Learning Campus, in partnership with further education institutions
- Successfully progressing employing local people to work at the Trust and targeting those currently on benefits, to work in the wide variety of roles a Trust of our size can offer
- Continue to progress the redesign for acute medicine, stroke, and community admission avoidance services, to continue to reduce bed occupancy and length of stay
- Work with colleagues to ensure they are ready and able to undertake their role should they be asked to relocate to the MMUH as part of their job



Thank you for listening
Any Questions?

